

Submersible Mixer Pump



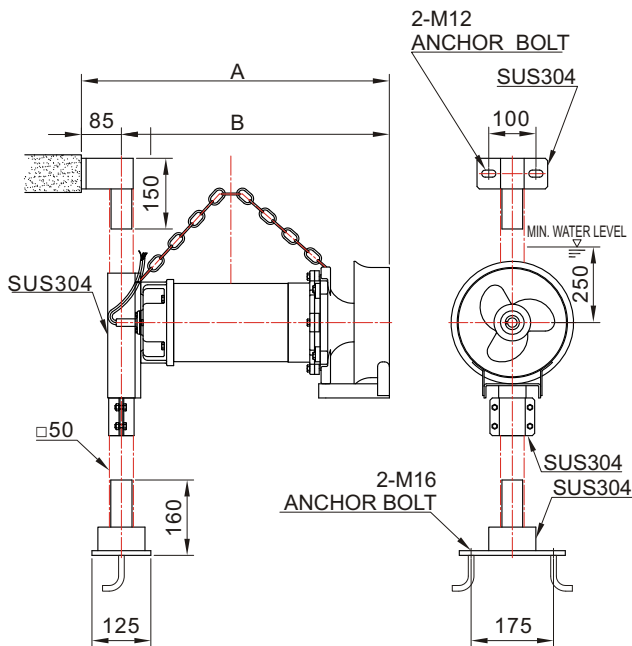
RM-3052
RM-313
RM-325
RM-337



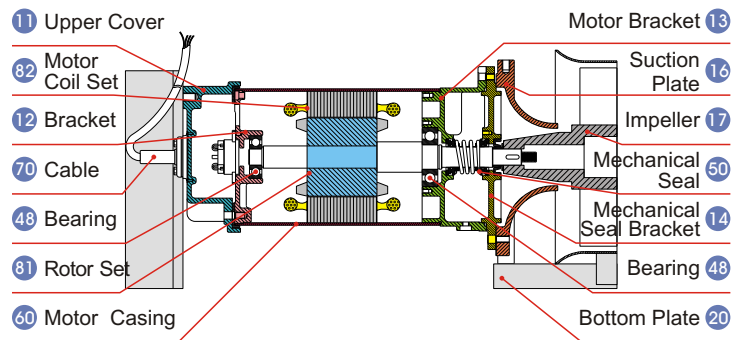
APPLICATION

1. Biological treatment tanks.
2. Equalization tanks.
3. Lime slurry storage tanks.
4. Ponds and rivers water circulations.
5. Heat exchanger
6. Ice prevention

DIMENSIONS (Guide bar installation)



STRUCTURAL DRAWING



MATERIAL AND STANDARD TABLE

	Caliber	50mm · 80mm
Liquid	Temperature	0°C~40°C (32°F~104°F)
	Application	Draining at civil engineering or building sites. Draining storm water, groundwater, or puddles. Draining from basements or utility pits.
Pump	Upper Cover	FC-200
	Bracket	FC-200
	Impeller	FCD-450
	Motor Bracket	FC-200
	Mechanical Seal Bracket	FC-200
	Bottom Plate	SS41
Motor	Type	Submersible dry type
	Inner protector	Auto Reset Motor Protector
	Casing	SUS-304
	Main Shaft	SUS-304
	Cable	VCT

SPECIFICATION

Type	Phase	Voltage	Power		Pole	Capacity	Flow Speed	Dimension(mm)		Remark
TYPE	PH	VOLT	HP	KW	P	M ³ /min	M/s	A	B	REM
RM-3052	3Ø	220/380	½	0.4	4P	1.8	1.78	480	395	
RM-313	3Ø	220/380	1	0.75	4P	3.2	2.02	510	425	
RM-325	3Ø	220/380	2	1.5	4P	4.5	2.50	632	567	
RM-337	3Ø	220/380	3	2.2	4P	6.8	3.50	652	587	

